

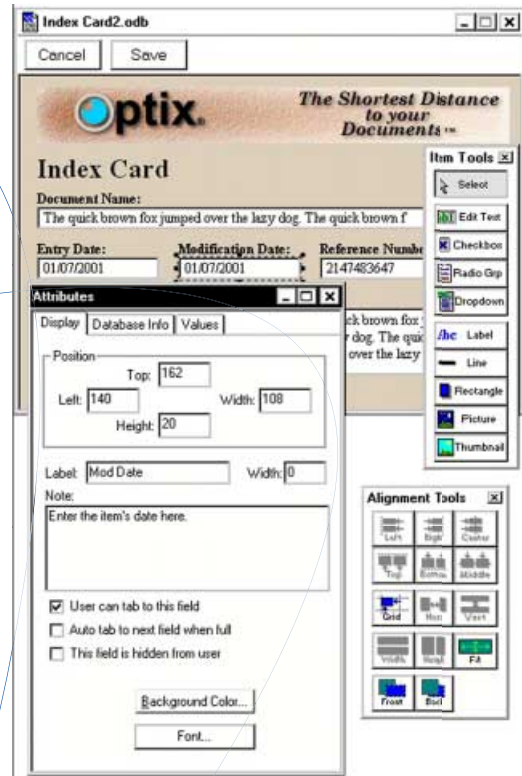
**Document Management and Workflow Systems**

Sure, you've thought about implementing a document management system. You need a database in order to index your documents, and a database means designing a schema, gaining user consensus on fields, and perhaps hiring a database administrator. Then there's the time working with the programmer to get the user interface done. And another round of meetings with the users, then more time with the programmer. Or even worse, using someone's pre-designed index application that isn't complete or doesn't match the way you do business. Weeks of effort and who has the time? So you stuck with those file cabinets, didn't you?

No more excuses.

With Optix Screen Generator, we've reduced those weeks of effort into an hour or two. Quickly drag and drop fields and graphics to create a new database table, indexing and query screen - all in one easy step. Text fields, dates, numbers, popup menus, checkboxes, radio buttons, and more are a snap to implement with Screen Generator. Drop your company logo on top to jazz it up and gather your users for a quick prototyping session and fast consensus. You'll have the perfect screen for your application in no time.

And when you're ready to give it a whirl, we've saved you the cost of a database administrator. Your Optix workstation can upload the screen to your Optix Server or Optix Local Filesystem and create the underlying database table for you - automatically. No need to spend hours delving into the mysteries of arcane database languages - you simply focus on the end result and we handle the implementation details. Once your screen has been loaded, you can begin to scan, store, index, and query documents immediately.



*"We can design and deploy a new custom indexed application in only a few hours"*

**Stefanie Elsea, System Administrator, IT Applications Department, BWXT Pantex**

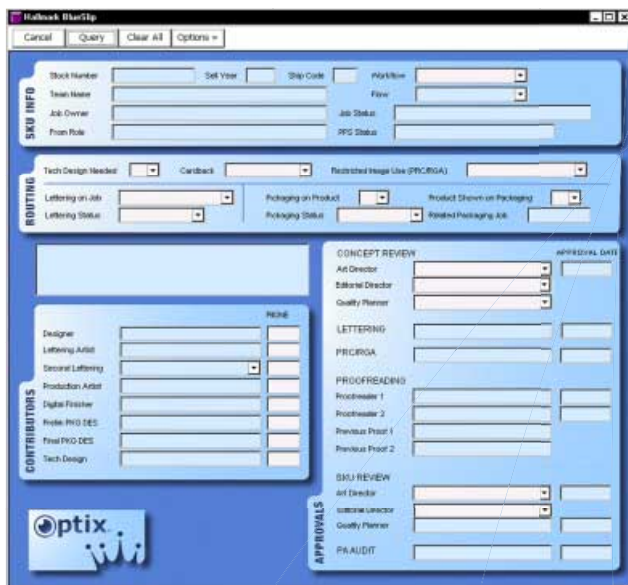
But wait, there's more.

Optix Screen Generator works seamlessly with our other Optix products. Use it to create Optix Workflow routing slips to direct your documents down automated processing paths throughout your office - or department - or enterprise.

And if your application requires access to documents via the web, we've got you covered there, too. Optix Web dynamically displays your screens so your browser users see the same beautiful interface as your Optix Workstation users - just as you intended.

Join the many satisfied Optix clients who have found just how fast and easy it is to deploy a new document management and workflow application.

We took away their excuses, too.



# Optix Screen Generator - Technotes

## Overview

- Design and develop document indexing applications using drag and drop.
- Use standard user interface elements such as text box, labels, radio buttons, checkboxes, popups/pulldown menus.
- Add graphical elements such as lines, boxes, colors, pictures, and logos.
- Create new tables including indexes through menu selection in the Optix client.
- Optix screens support standard SQL query types including wildcards, Boolean, and arithmetic ranges.
- Screens can also be used as workflow routing slips including rules-based conditional routing with the addition of the optional Optix Workflow module.
- Optix Server centrally stores and manages screens, including security that allows the system administrator to control access. Security can restrict who can add, query, modify, and delete records.
- Screens developed can be used on Macintosh, Windows, and Optix Web 6 platforms.

## Details

### *Data Types*

- Character, numeric, fixed point, and date/time data types are supported.
- Character fields up to 250 characters in length.
- Other data types supported depending on server platform and database.
- Supports up to 240 fields per screen (Optix Server), 63 fields (Optix Single User Edition).
- Total record length of up to (approximately) 8 kilobytes (Optix Server).
- Supports multiple index definitions, including multipart and unique.
- Some functionality may be restricted by the limits of the underlying database.

### *Design Tools*

- Field definitions can include presets such as today's date, the user's name, and fixed (literal) values.
- Presets can be defined for both inserts and updates.
- Provides counters to generate a system unique value for records.
- Regular expression edit masks can limit data entry to specific patterns (example: SSN, telephone number)
- Sticky fields allow repetitive data to be carried over from one index to another to reduce key strokes.
- Fields can be locked on insert or update to prevent user modification of values.



**mindwrap inc.**  
664H Zachary Taylor Highway  
PO Box 430  
Flint Hill, Virginia 22627 U.S.A.  
(540) 675-3015  
[www.mindwrap.com](http://www.mindwrap.com)  
[info@mindwrap.com](mailto:info@mindwrap.com)